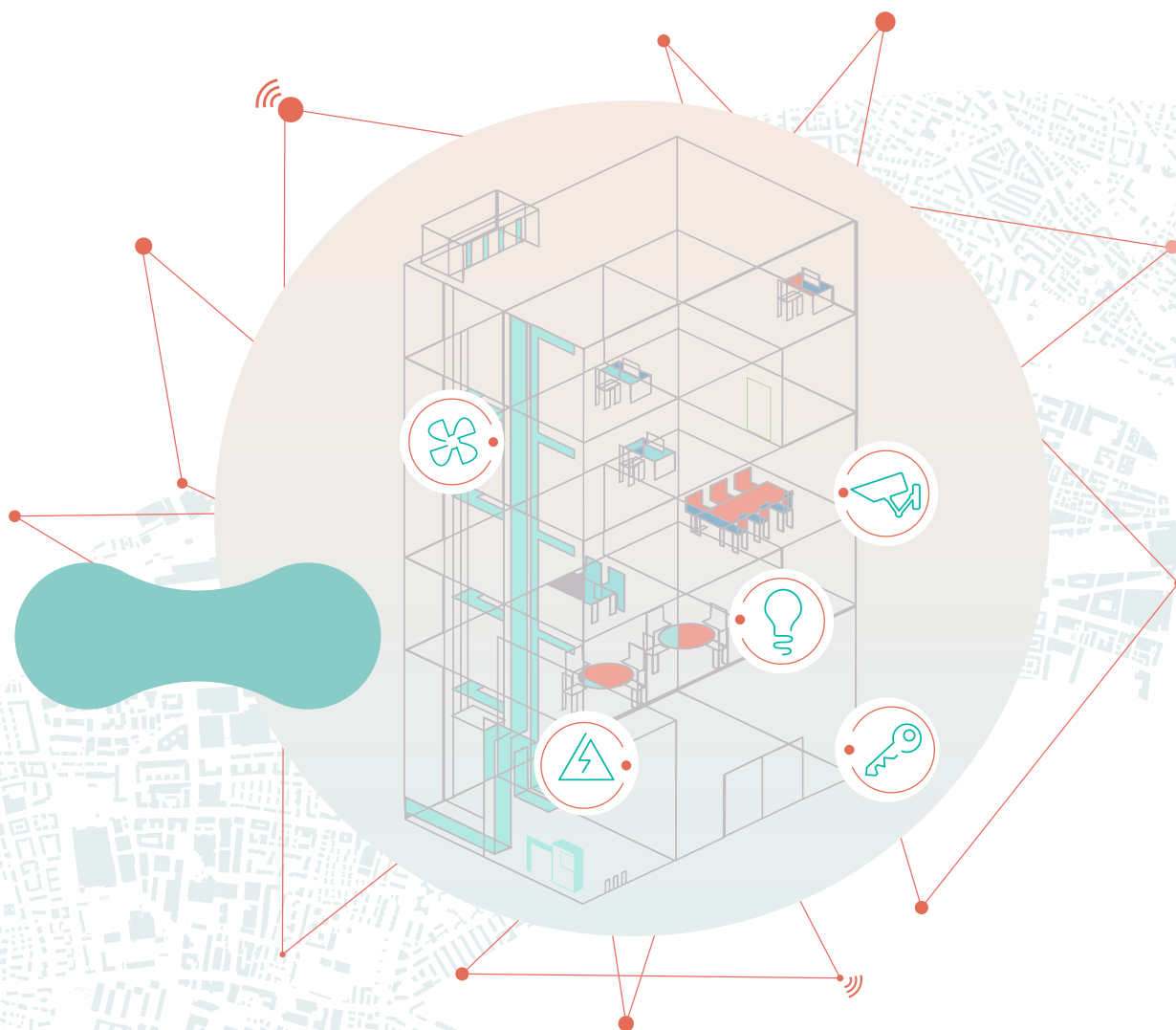




USE CASE

# Maintaining safe and highly automated facility management operations

with IoT-driven field service software



”

Today's facility managers need highly automated tools which allow fast and efficient dispatching of the right resource to the right location



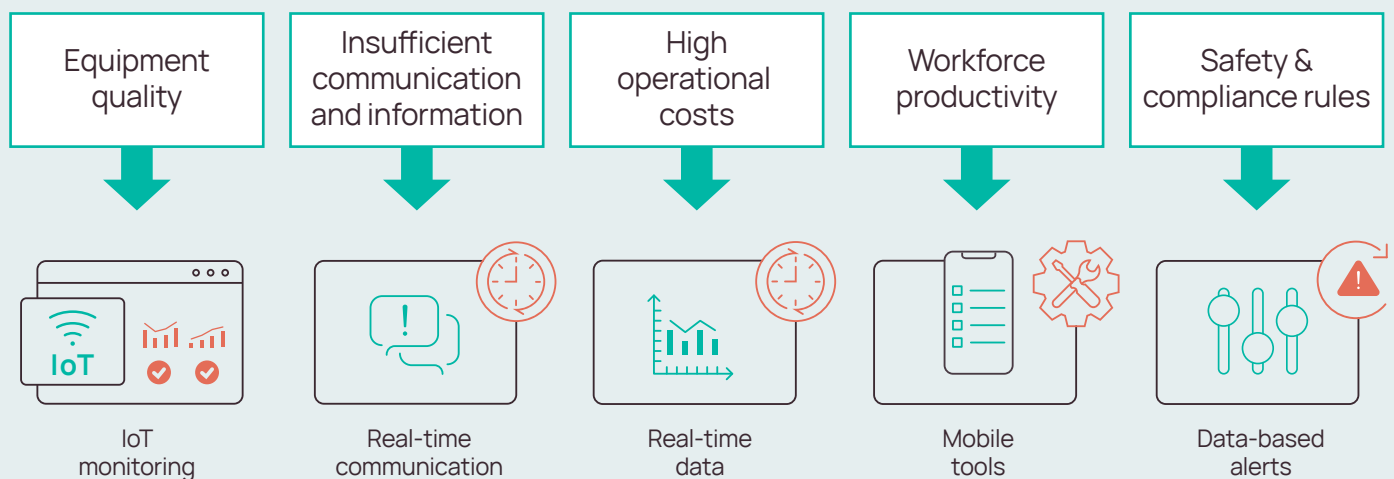
# Conquering the obstacles in facility management with disruptive IoT driven technology

Today, facility management businesses must balance numerous responsibilities such as maintaining aging infrastructure, increasing workforce productivity and asset utilization, cutting down costs, eliminating paperwork, and maximizing revenue. By adopting a smart field service solution, it is possible to juggle successfully these multiple obligations and become more efficient overall.

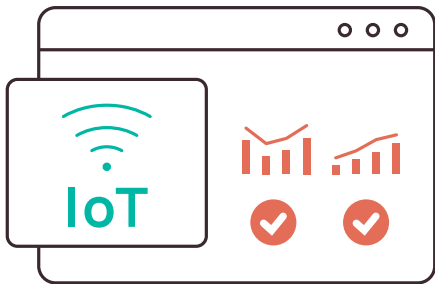
Questionable equipment quality, insufficient data along with high operational costs are proactively minimized, while employee performance increases and strict regulatory standards can be easily adhered to.

## IoT implementation and its advantages to facility management

The success of a smart Field Service Management (FSM) solution lies in the fact that it eventually becomes a unified system. Through this system, facility management companies can monitor the entire cycle of operations.



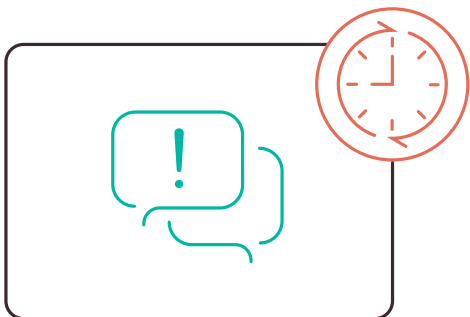
# Maintain equipment quality thanks to ongoing IoT monitoring



IoT sensors placed in managed properties, allow constant monitoring of your assets and alert for any imminent faults in real-time, ultimately resulting in quick and correct decisions around facility management.

The analytics dashboard shows the IoT sensor data to indicate factors such as air quality, energy consumption, water usage, temperature change and any other type of monitoring parameters. This allows to plan and schedule preventive maintenance of equipment before a problem occurs and ultimately causes unplanned downtime.

# Avoid insufficient workforce communication with real-time updates



Managing a workforce on the move requires precise information exchange between dispatchers and technicians. Field staff needs to access the correct information instantly so they can schedule tasks appropriately and meet their customers' needs.

Service technicians often encounter several difficulties with tasks assigned to them. At times, the technicians arrive at a given facility with insufficient information, resources, or time. Consequently, field staff must make more trips to complete the assigned tasks.

The Fieldcode AI-enabled scheduling can eliminate issues like the above. The software also features **high-end multilayer disposition**, optimized route planning, and no-touch ticket assignment. Therefore, it improves the whole scheduling process by determining the specific requirements beforehand. As a result, service technicians are dispatched with the correct data and adequate time to carry out tasks with location tracking, route optimization, and job status notifications.



# Keeping operational costs low with real-time data



One of the biggest issues a facility manager faces is minimizing operational costs. Overdue ordering of replacement components, scheduling that leads to inefficient work distribution, poor financial planning, unnecessary truck rolls, etc. are situations that will cost extra.

By investing in an end-to-end FSM software, managers can easily keep track of these costs, understand where and why these are rising, and bring them successfully under control. What is more, the process is complete in real-time, meaning there is no more waiting for end of quarter reports.

Find out when your maintenance job kicks off and manage the project effectively. Gain visibility into your technicians' daily performance and understand how their productivity fluctuates on a 24/7 basis. Take advantage of real-time data to facilitate intelligent business decisions that result in minimum operational costs and increased revenue.

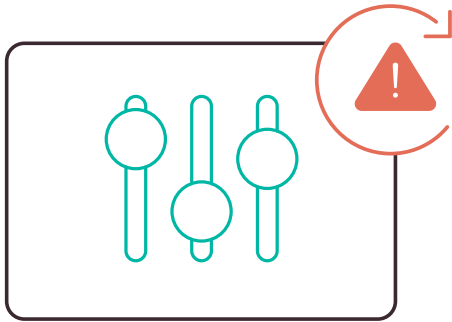
# Maintain workforce productivity levels with the right mobile tools



By investing in a centralized field service platform, employees in the office and on the field have the right information at the right time. Technicians have access to replenished parts' stock instead of waiting for these to be ordered in.

Predictive and condition-based maintenance enables facility managers to become more sustainable all around. The embedded IoT sensors collect instantaneous data and alerts about necessary component replacement while giving access to previous maintenance records and replacing most of manual paperwork with digital tools. This way, the employee productivity remains high and maintenance tasks are completed effortlessly.

# Avoiding fines & violations with data-based alerts



Facility management covers multiple disciplines to ensure functionality of the built environment and the effective delivery of organizational support services. Consequently, adhering to the regulations is a challenge that pertains to the complicated process of critical data collection.

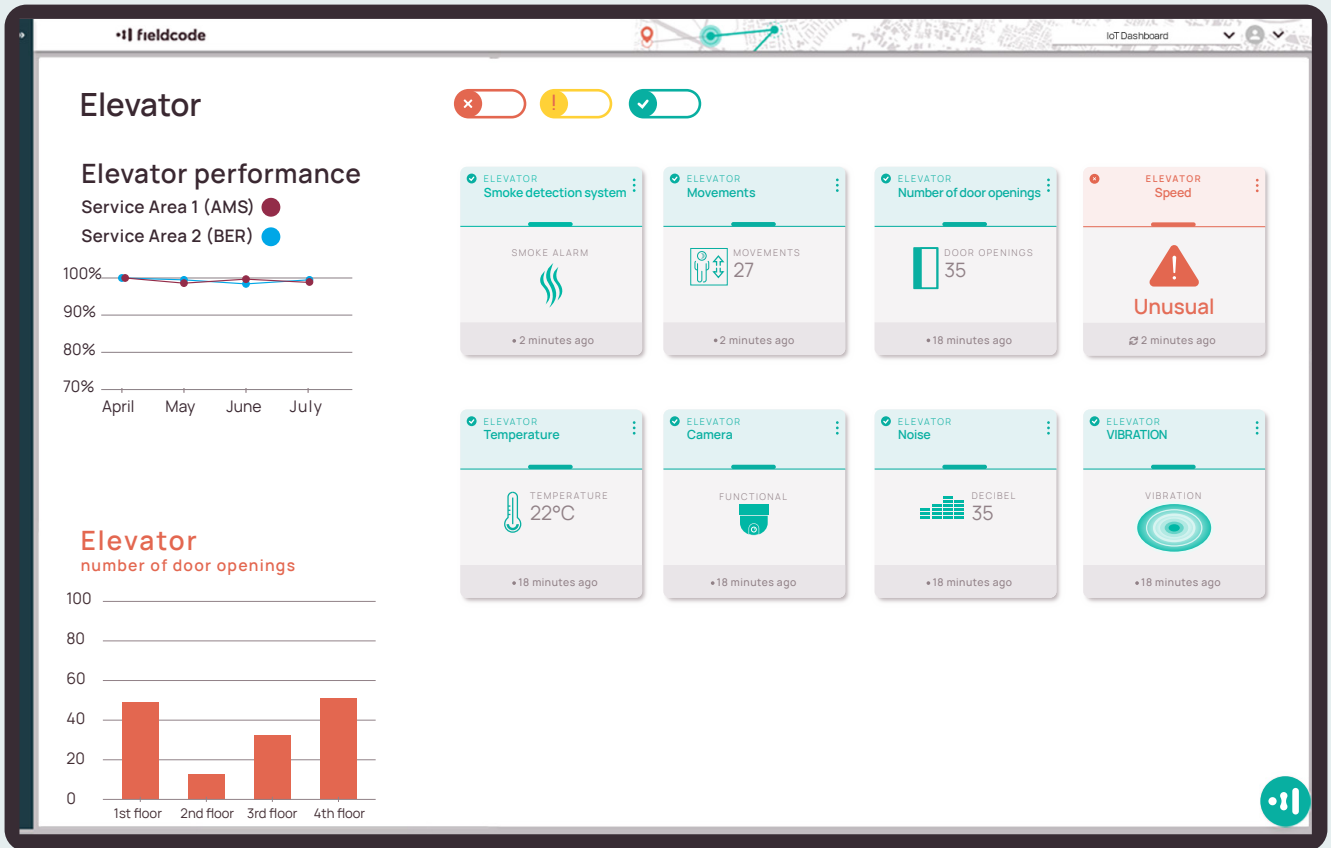
Enterprises need to address the complexity of this integration and build an inclusive approach that promotes operational and regulatory compliance to avoid severe penalties.

In other words, compliance is a top priority if companies want to avoid potential risks and legal liabilities. For this reason, it is equally important to not only collect the data related to compliance but also ensure that it is accurate, consistent, complete, and secure from data breaches and cyber-attacks.

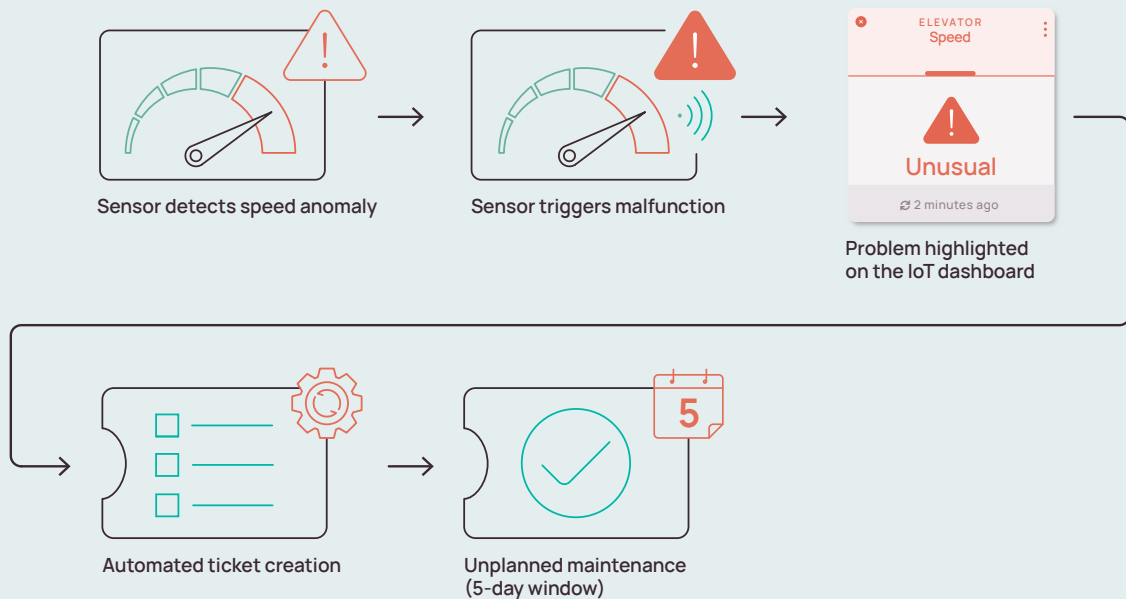
An FSM software with automated workflows and critical alerts makes safety and compliance mandatory by integrating these issues into the field service work itself. Thereby, with an inclusive FSM software solution, facility companies benefit from an innovative set of features to overcome the challenge of complying with numerous rules and regulations, as they can easily collect critical data and receive timely alerts on imminent violations that would otherwise cost them hefty fines.



# Fieldcode IoT-based facility management dashboard at a glance



## Ticket workflow in the case of sensor-triggered warning



”

A smart field service solution will ensure efficient management of facility maintenance services leading to higher monthly revenue among other benefits



# The benefits from implementing IoT

Emergency interventions and unnecessary multiple visits to the customer site can be costly. Avoid support cases where it is already too late with predictive maintenance and embedded IoT technology. What is more, by scheduling such interventions ahead of a real failure, significant cost reductions can be achieved.

Up to  
→ **10%**  
Increased  
monthly  
revenue

→ **15%**  
Reduction of  
maintenance  
cost

Avg  
→ **40%**  
Increased  
productivity of  
field workers





Do you have questions?  
Contact us today!



+49 911 9909 9111  
[support@fieldcode.com](mailto:support@fieldcode.com)  
[fieldcode.com](https://fieldcode.com)